



MANDAM Sp. z o.o.
Poland, 44-100 Gliwice ul. Toruńska 14
e-mail mandam@mandam.com.pl
Tel.: 032 232 26 60 Fax: 032 232 58 85
NIP: 648 000 16 74 REGON: P - 008173131

HBS (hydraulic lockout system) for

GAL-K disc harrows

GAL-K HD disc harrows

GAL-K XL disc harrows

Issued I
Gliwice 2025

TLUMACZENIE INSTRUKCJI ORIGINALNEJ
ENG

1. Introduction

This manual is intended to familiarize the user with the procedure for installing a HBS hydraulic accumulator into the machine's hydraulic system. The following sections include installation instructions, a list of parts, and important installation notes. The purpose of the hydraulic accumulator is to maintain constant pressure in the hydraulic system responsible for operating the hydraulic locking cylinders of the machine's wing frames. If the manual contains unclear information, or if the machine operator encounters an issue not covered in this manual, they may obtain detailed explanations by contacting the manufacturer. In such cases, the following information should be provided: the purchaser's full address, the machine model, serial number, year of manufacture, and the year and edition number of the user manual.

- Instructions that are important for safety reasons are marked with the following symbol:



With our customers' best interests in mind, we continuously improve our products and adapt our offerings to meet their needs. Therefore, we reserve the right to make changes to the products without prior notice.

2. HBS Hydraulic Accumulator system installation guide

To begin the installation, the machine operator must have a set consisting of:

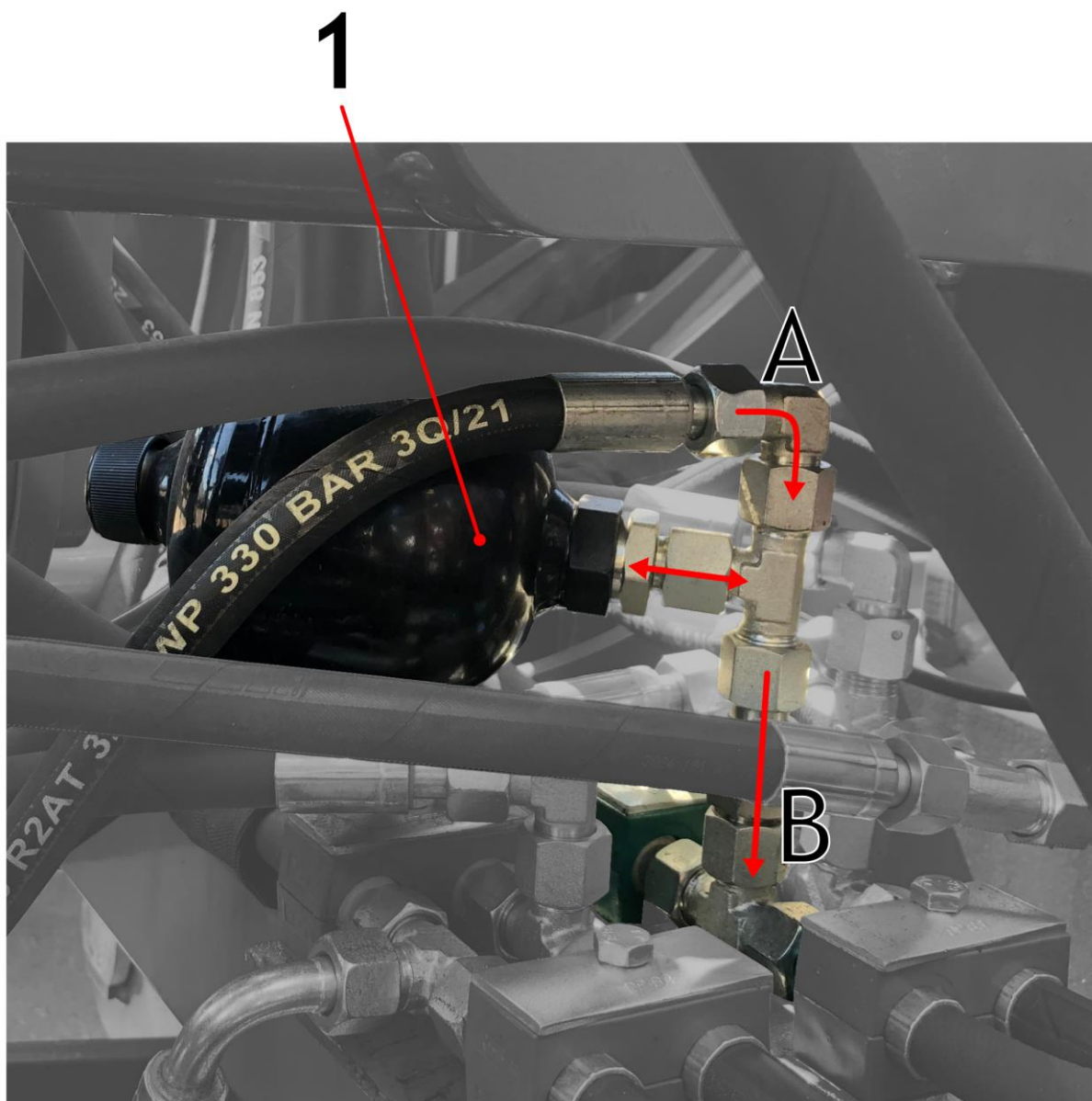
- Accumulator ALAC- WA 0,5l (dwg 1 pos. 1)
- Reduction joint (dwg 2 pos. 10),
- T-joint (dwg 2 pos. 11),
- Hydraulic adapters M14x1,5 - M14x1,5 (dwg 2 pos. 9),



WARNING! The hydraulic system of the unit is under pressure!

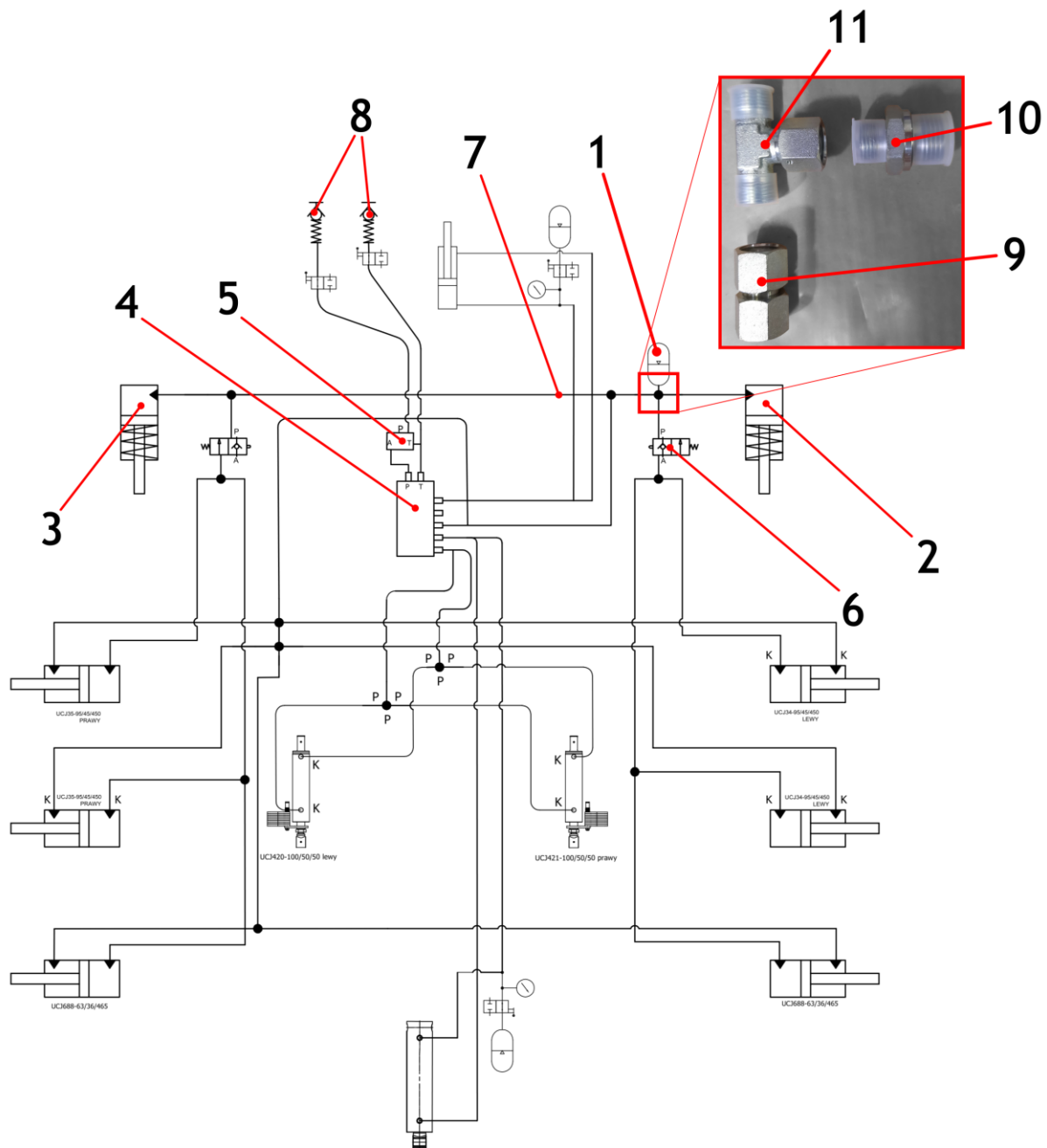
To connect the hydraulic accumulator, proceed as follows:

- 1) Unfold the unit and lower it to the ground, then switch off the tractor engine.
- 2) Check the stability of the unit.
- 3) Unscrew the hydraulic supply hose from the T-fitting supplying the HBS cylinders.
- 4) Install, in order: the adapter, the T-fitting, and the reducer.
- 5) Connect the hydraulic accumulator to the reducer.
- 6) Connect the hose supplying the valve block to the free outlet of the T-fitting.
- 7) Fill the system and check for leaks.



*Drawing #1 Hydraulic accumulator mont on disc harrow (1 - Accumulator)
A - hydraulic valve block supply direction
B - T-joint do HBS actuator feed direction*

3. Hydraulic diagram of the system with a hydraulic accumulator



Drawing #2 - GAL-K XL hydraulic system diagram (1 - Accumulator, 2 - HBS actuator, 3 - HBS actuator, 4 - Valve manifold, 5 - Flow adjusting valve, 6 - Adapter & limit valve, 7 - Hydraulic hose, 8 - Quick connector, 9 - Adapter, 10 - Reduction joint, 11 - T-joint)

All rights reserved, with reference to the provisions of the Copyright Act (Journal of Laws No. 24/52, item 234, including subsequent amendments). Any use, reproduction, or distribution is only permitted with the written consent of MANDAM SP. Z O.O.