

Knife blade roller

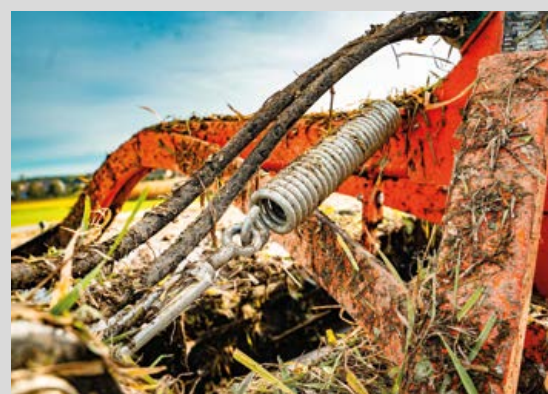


WN TANDEM HD



WNT HD TANDEM knife roller is a reinforced version of the standard WNT machine designed for work in the most difficult conditions, equipped with a double $\varnothing 560$ mm roller and HARDOX guillotine knives. The top cover is standard. The purpose of the roller is intensive shredding of plant mass along with crushing and partial covering. This accelerates the decomposition of residues, which is conducive to further work on post-harvest crops. The working depth of the machine is 2-3 cm (knife depth).

In the HD type machine, a high degree of shredding, crushing, and mixing of residues is achieved thanks to the use of an aggressive knife mounted on two rollers with a different number of knife rows on the circumference of the roller (7-row and 8-row roller). Thanks to this, during the passage, there is no overlap of cutting marks by cooperating rollers. This allows the roller to be used in demanding working conditions.



STANDARD EQUIPMENT

- Aggressive angle HARDOX™ blades
- Top stone cover plate
- Desne blade arrangement

		M		PC	MM	HP	KG
6750	WN Tandem HD 3,0	3,00	-	8+7	d=560	60	1020
6755	WN Tandem HD 3,5	3,50	-	8+7	d=560	65	1260
6760	WN Tandem HD 4,0	4,00	-	8+7	d=560	80	1330
6765	WN Tandem HD 4,0 H	4,00	+	8+7	d=560	80	1520
6770	WN Tandem HD 5,0 H	5,00	+	8+7	d=560	100	1770
6775	WN Tandem HD 6,0 H	6,00	+	8+7	d=560	120	1980



More about
the machine

Mandam Sp. z o.o.
44-100 Gliwice, ul. Toruńska 14
0048 32 232 26 60 • mandam.com.pl



Knife blade roller



WN TANDEM



WNT TANDEM KNIFE ROLLER is a machine designed for intensive shredding of plant material (straw, crop residues, stubble, catch crops) along with crushing and partial covering. This accelerates the decomposition of residues, which facilitates further work on crops.

The working depth of the machine is 2-3 cm (knife recess). The working tool of the tandem knife roller is a straight or special knife made of HARDOX steel. The knives are installed on two $\varnothing 460$ mm rollers with a different number of rows, thanks to which the cutting marks of the cooperating rollers do not overlap.

The working speed and low resistance of the roller allow for high efficiency, while maintaining low fuel consumption.



STANDARD EQUIPMENT

➔ Straight HARDOX™ blades



More about
the machine

Mandam Sp. z o.o.
44-100 Gliwice, ul. Toruńska 14
0048 32 232 26 60 • mandam.com.pl

